



# FITTING INSTRUCTIONS

Part Number: **5438200**  
Product **Under Vehicle protection**  
Description:  
Suited to **Nissan Navara NP300 (D23) '15 On**  
vehicle/s:

## WARNING

### REGARDING VEHICLES EQUIPPED WITH SRS AIRBAG:

When installed in accordance with these instructions, the vehicle protection panels do not affect operation of the SRS airbag.

### ALSO, NOTE THE FOLLOWING:

- ◆ This product must be installed exactly as per these instructions using only the hardware supplied.
- ◆ Do not use this product for any vehicle make or model, other than those specified by ARB.
- ◆ Do not remove labels (if any) from this product.
- ◆ This product or its fixing must not be modified in any way.
- ◆ The installation of this product may require the use of specialized tools and/or techniques
- ◆ These instructions are correct as at the publication date. ARB Corporation Ltd. cannot be held responsible for the impact of any changes subsequently made by the vehicle manufacturer
- ◆ During installation, it is the duty of the installer to check correct operation/clearances of all components
- ◆ Work safely at all times
- ◆ Unless otherwise instructed, tighten fasteners to specified torque

## **ARB 4x4 ACCESSORIES**

Corporate Head Office

42-44 Garden St  
Kilsyth, Victoria  
AUSTRALIA 3137

Tel: +61 (3) 9761 6622  
Fax: +61 (3) 9761 6807

Australian enquiries  
North & South American enquiries  
Other international enquiries

sales@arb.com.au  
sales@arb.com.au  
exports@arb.com.au

**www.arb.com.au**

# IMPORTANT INFORMATION. GENERAL CARE AND MAINTENANCE

By choosing ARB vehicle protection, you have bought a product that is one of the most sought after 4WD products in the world. Your under vehicle protection panels are a properly engineered, reliable, quality accessory that represents excellent value.

- While these panels have been engineered for strength and functionality care and good judgment should be taken when traversing difficult off-road conditions to minimise damage to panels and vehicle.
- During servicing when panels are removed ensure fasteners are re-fitted to the correct torque values.
- Inspect panels visually on a regular basis. Dirt and foreign matter should be washed out to minimise build-up around hot components. **BE VERY CAREFUL** when removing foreign matter with hands while vehicle is hot or running. Replace any components as necessary. This service can be performed by your local authorized ARB Stockist.

## FITTING REQUIREMENTS

### REQUIRED TOOLS FOR FITMENT OF PRODUCT:

BASIC TOOL KIT

TORQUE WRENCH (Nm – 44Nm)

### HAVE AVAILABLE THESE SAFETY ITEMS WHEN FITTING PRODUCT:

Protective eyewear



Hearing protection



**NOTE: 'WARNING' notes in the fitting procedure relate to OHS situations, where to avoid a potentially hazardous situation it is suggested that protective safety gear be worn or a safe work procedure be employed. If these notes and warnings are not heeded, injury may result.**

### FASTENER TORQUE SETTINGS:

SIZE	Torque Nm	Torque lbft
M6	9Nm	7lbft
M8	22Nm	16lbft
M10	44Nm	32lbft
M12	77Nm	57lbft

## PARTS LISTING

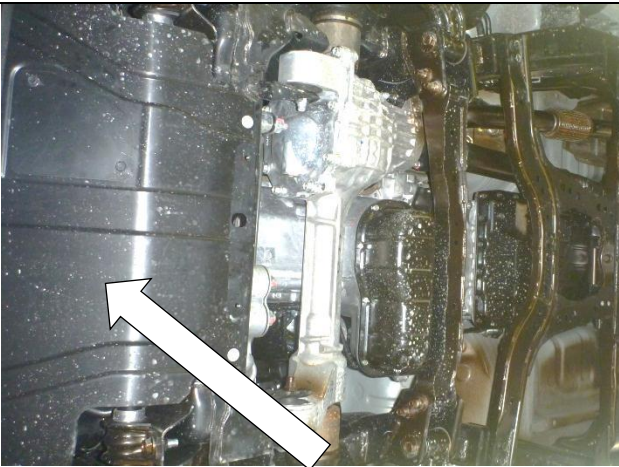
APPLICATION.	PART NO.	QTY	DESCRIPTION
Front Panel fitment	6523023	1	PANEL FRONT ASSY D23 UVP
	6151022	5	BOLT M8 x 1.25 x 25mm GR8.8 ZP
	4581044	5	WASHER FLAT M8 ZP
	4581046	5	WASHER SPRING M8 ZP
	4654084	1	NUT PLATE M10 x 1.5
	6151204	1	BOLT M10 X 1.5 x 35mm GR8.8 ZP
	4581040	1	WASHER FLAT M10 ZP
	4581048	1	WASHER SPRING M10 ZP
Diff Panel fitment	6523024	1	PANEL DIFF ASSY D23 UVP
	6151022	3	BOLT M8 x 1.25 x 25mm GR8.8 ZP
	4581044	3	WASHER FLAT M8 ZP
	4581046	3	WASHER SPRING M8 ZP
	6151132	3	FLANGE NUT M8 x 1.25
	3194751	2	SPACER DIFF PANEL
	6151614	3	BOLT M10 x 1.5 x 70mm GR8.8 ZP
	4581040	3	WASHER FLAT M10 ZP
	4581048	3	WASHER SPRING M10 ZP
	6151321	3	FLANGE NUT M10 x 1.5
Transmission Panel fitment	6523025	1	PANEL TRANSMISSION ASSY D23 UVP
	4654084	2	NUT PLATE M10 x 1.5
	6151204	2	BOLT M10 X 1.5 x 35mm GR8.8 ZP
	4581040	2	WASHER FLAT M10 ZP
	4581048	2	WASHER SPRING M10 ZP
Transfer Case Panel fitment	6523026	1	PANEL TRNSFR CASE ASSY D23 UVP
	3759653	1	BRKT SUPPORT TRNSFR CASE
	6151022	2	BOLT M8 x 1.25 x 25mm GR8.8 ZP
	4581044	2	WASHER FLAT M8 ZP
	4581046	2	WASHER SPRING M8 ZP
	6151132	2	FLANGE NUT M8 x 1.25

## FITTING PROCEDURE – Fitment with OEM bumper



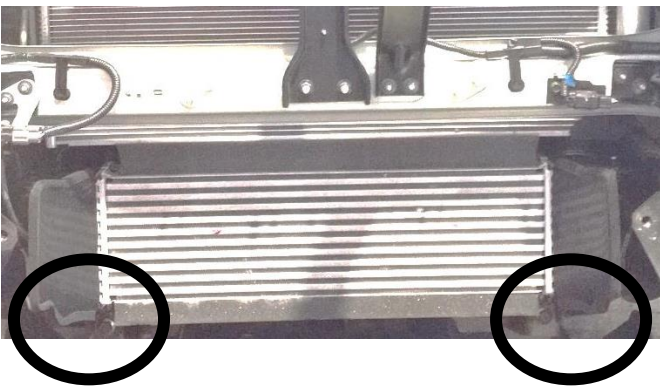
1. Remove dressing piece from lower section of bumper (leave bumper attached to vehicle).

Retain fasteners removed.

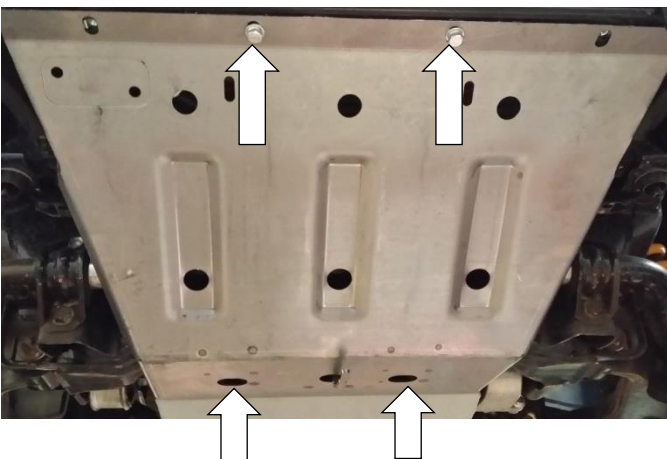


2. Remove OEM stone guard from vehicle.

Retain 2x M6 fasteners removed from crash beam.

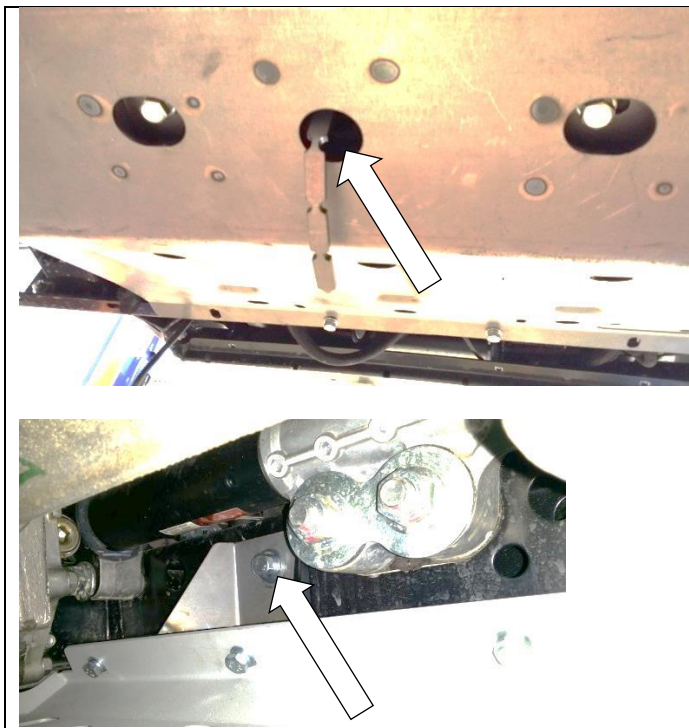


3. Trim lower section of air deflectors located on each end of intercooler by an even 10mm.



4. Loosely secure rear section of front panel to vehicle chassis cross member using 2x M8x25mm bolts, 2x M8 spring washers and 2x M8 flat washers (M8 captive nuts in chassis).

5. Secure front section of front panel to vehicle crash beam using existing OEM M6 fasteners removed from crash beam.



6. Fasten M10 nut plate at rear of front panel to chassis using an M10x35mm bolt, M10 spring washer and M10 flat washer and tighten all M8 and M10 fasteners.
7. Re-fit bumper and dressing piece using fasteners retained in STEP 1.

**Note:** OEM bumper tabs will rest up against front panel and will not be fastened to front panel.

**Note:** Feed the M10 nut plate through opening under front cross member as shown.

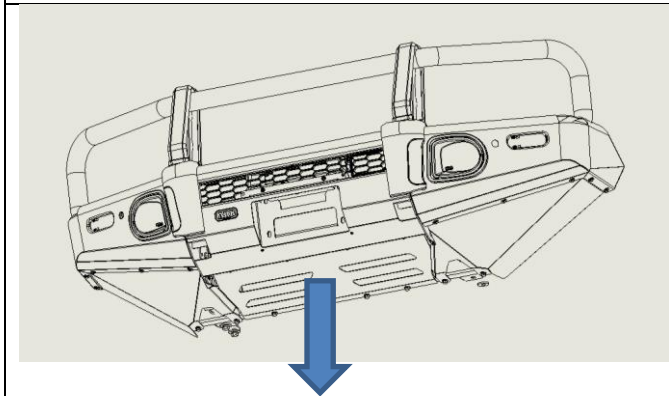


M10 – 44Nm

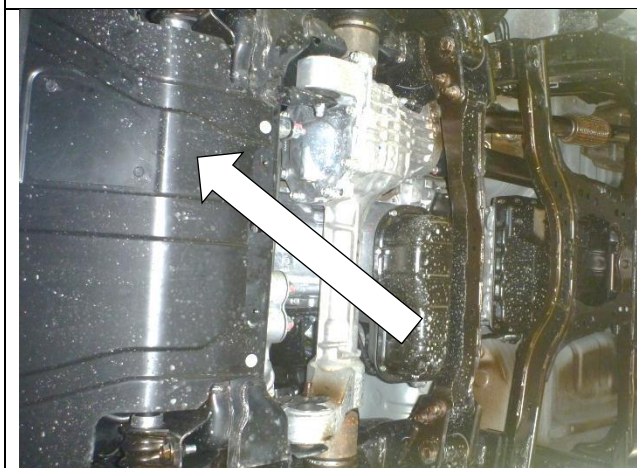
M8 – 22Nm

M6 – 9Nm

### FITTING PROCEDURE – Fitment with ARB bull bar



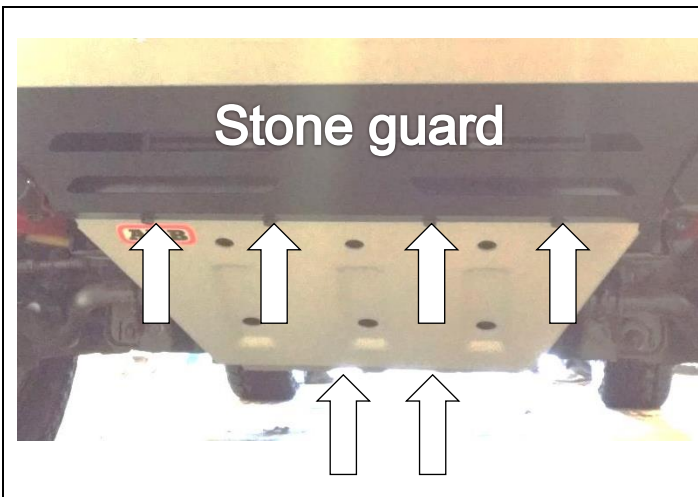
8. Remove ARB stone guard and retain all M6 and M8 fasteners removed.



9. Remove OEM stone guard from vehicle.  
  
Discard of 2x M8 fasteners used to retain OEM stone guard to vehicle cross member.



10. Trim lower section of air deflectors located on each end of intercooler by an even 10mm.






11. Loosely secure rear section of front panel to vehicle chassis cross member using 2x M8x25mm bolts, 2x M8 spring washers and 2x M8 flat washers (M8 captive nuts in chassis).
12. Re-fit stone guard using fasteners retained in STEP 8 to bull bar with front panel sitting between mount cross member and stone guard.

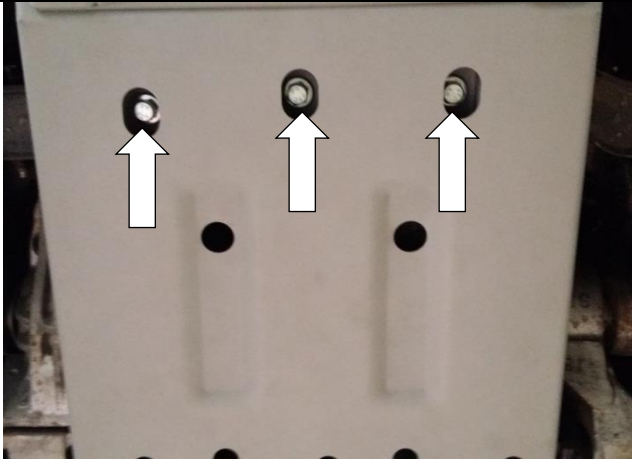


13. Fasten M10 nut plate at rear of front panel to chassis using an M10x35mm bolt, M10 spring washer and M10 flat washer and tighten all M8 and M10 fasteners.

**Note:** Feed the M10 nut plate through opening under front cross member as shown.

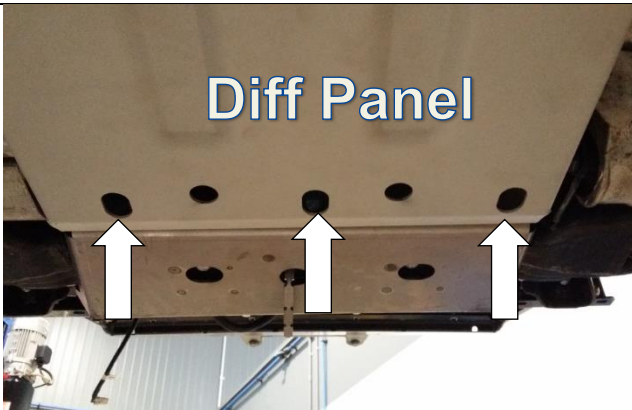
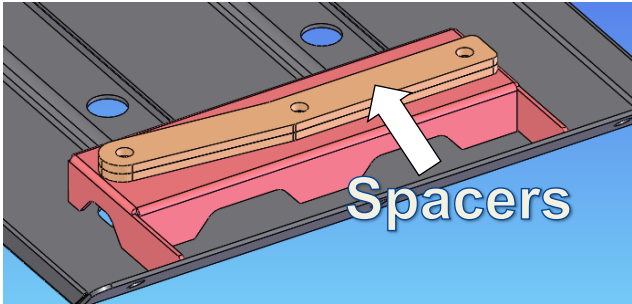
-  M10 – 44Nm
-  M8 – 22Nm
-  M6 – 9Nm

## FITTING PROCEDURE – For both ARB bull bar and OEM bumper continued



- Loosely fasten diff panel to underside of chassis using 3x M10x70mm bolts, 3x M10 spring washers, 3x M10 flat washers and 3x M10 flange nuts.

Position 2 spacers between diff panel and chassis cross member.



- Loosely fasten diff panel to front panel using 3x M8x25mm bolts, 3x M8 spring washers and 3x M8 flat washers.

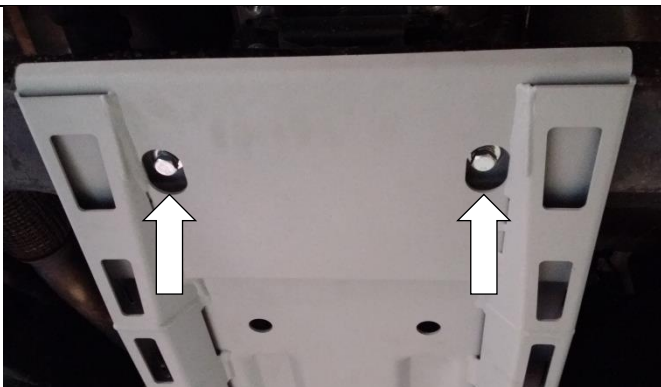
Tighten all fasteners in steps 14-15 beginning with 3 bolts connecting diff panel to front panel.



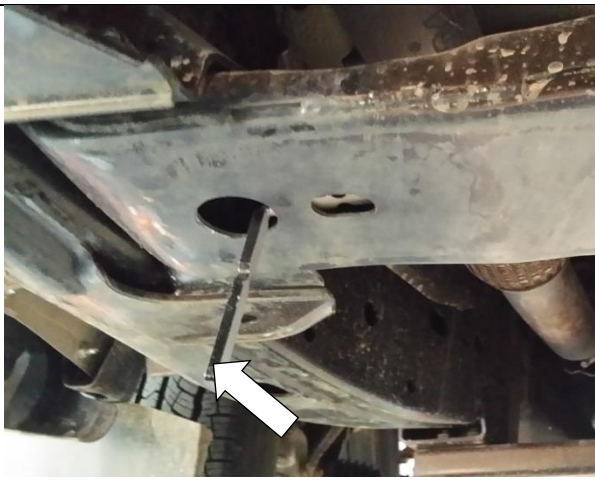
M8 – 22Nm



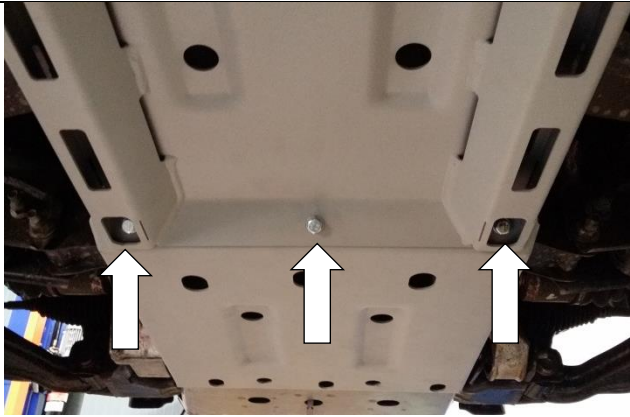
M10 – 44Nm



- Loosely fasten transmission panel to chassis cross member using 2x M10x35mm bolts, 2x M10 spring washers, 2x M10 flat washers and 2x M10 nut plate.



**Note:** Feed nut plates through slot openings located on underside of rear cross member.



17. Loosely fasten transmission panel to diff panel using 3x M8x25mm bolts, 3x M8 spring washers, 3x M8 flat washers and 3x M8 flange nuts.

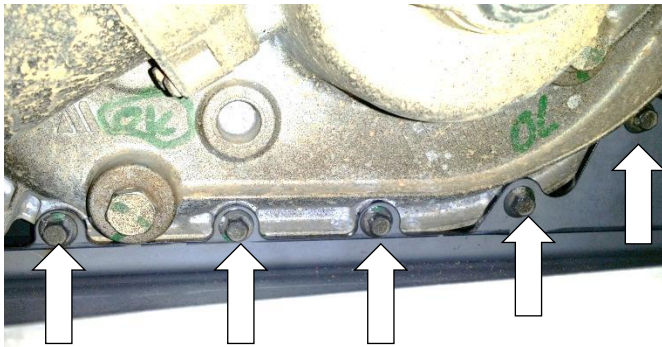
Tighten all fasteners in steps 16-17 beginning with 3 bolts connecting transmission panel to diff panel.



M10 – 44Nm



M8 – 22Nm



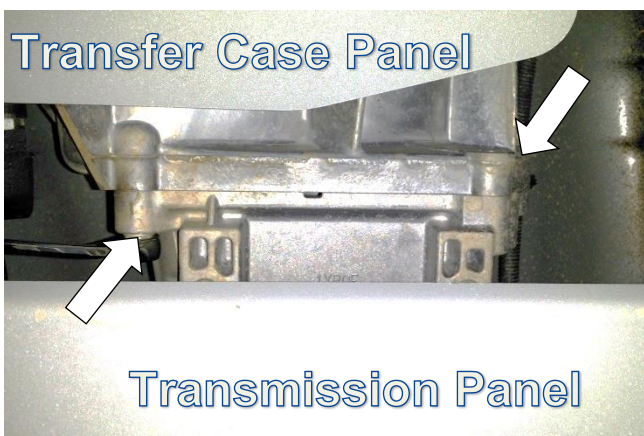
18. Remove 5x fasteners in lower section of transfer case.

19. Fasten transfer case panel to transfer case using the fasteners retained from previous step.

Note: May need to gently move exhaust out of the way slightly to gain access to fasteners with socket extension.



M8 – 22Nm



20. Looking directly underneath vehicle between transmission panel and transfer case panel, remove and retain 2x bolts as shown.

21. Loosely fasten transfer case panel support bracket to transfer case panel using 2x M8x25mm bolts, 2x M8 flat washers, 2x M8 spring washers and 2x M8 flange nuts.

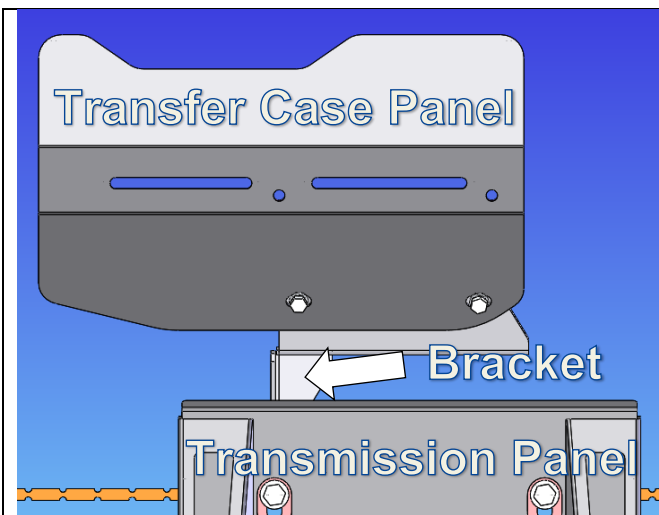
22. Loosely fasten bracket to transfer case using 2x bolts removed in step 20.

23. Tighten all fasteners.



M8 – 22Nm





Fitted Product – D23 UVP SET

